

Memo

Project: National Paediatric Hospital

Report Type: Summary of Dust Monitoring Results

Period of Monitoring: 7th August 2018 – 4th September

Introduction

The requirement for Dust Monitoring on site is laid out in the Project Environmental Impact Statement (EIS) that would have been submitted as part of the Planning Permission for the project. A number of monitoring points around the perimeter of the site are used to record dust levels. The location and number of dust monitors may vary throughout the project depending on activities on site.

Dust Monitoring.

The monitors are examined monthly and the levels of dust recorded are compared to a dust limit of 350mg/m²/day set out in the Project EIS. The monitoring points are monitored on a 'trigger level' basis - so if a predetermined level of dust is exceeded the Main Contractor shall review work processes and modify as required to reduce the level of dust generated.

Number of Monitors on Site during Monitoring Period:

Eleven.

Location of Monitors:

The location of dust monitoring points since May 2018 (D1, D2, etc.) can be seen in Figure 1. Previous dust monitor locations for the period September 2017 to April 2018 and April 2017 to August 2017 and are shown in Figures 2 and 3 respectively for reference.

Observations:

The dust monitoring period for August extends from 7th August 2018 – 4th September. (Results for July included testing up to and including 7th August, meaning all working days on site have been captured in the dust monitoring results)

Over this period, all monitors were tested on a monthly basis i.e. once.

Works on site during this monitoring period include, but are not limited to:

- Demolition of old utility tunnel and excavating material from site at O'Reilly Avenue/Energy Centre.
- Excavation of materials from site and construction of basement slab at the hospital entrance.
- Steel works for capping beam and excavation of material from site near Cameron Square.
- Construction of basement slab at South Circular Road.
- Excavation of materials from site near Mount Brown.

Overall, all 11 dust monitors on site showed levels of dust equal to or lower than the levels specified in the Project EIS, 350mg/m²/day.

Memo

Dust Monitoring Point D6 recorded the highest reading of the 11 dust monitors and is located near the hospital entrance. The dust deposition rate was approximately equal to the limit specified in the Project EIS. During this monitoring period, there were excavation works ongoing in this area which may have resulted in this higher reading.

Memo

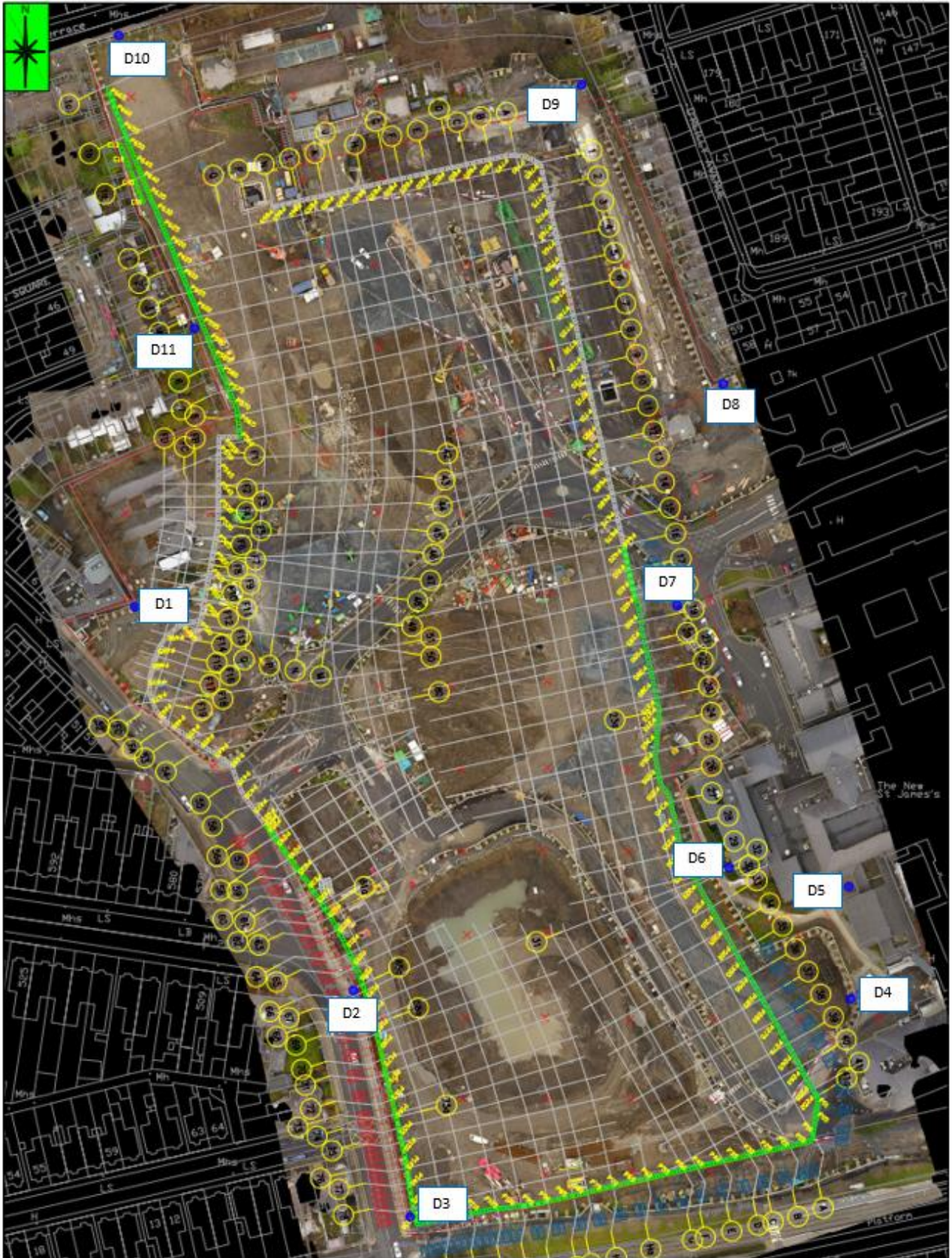


Figure 1. Location of Dust monitors on site (May 2018).

Memo



Figure 2. Location of Dust monitors on site (September 2017 – April 2018).

Memo

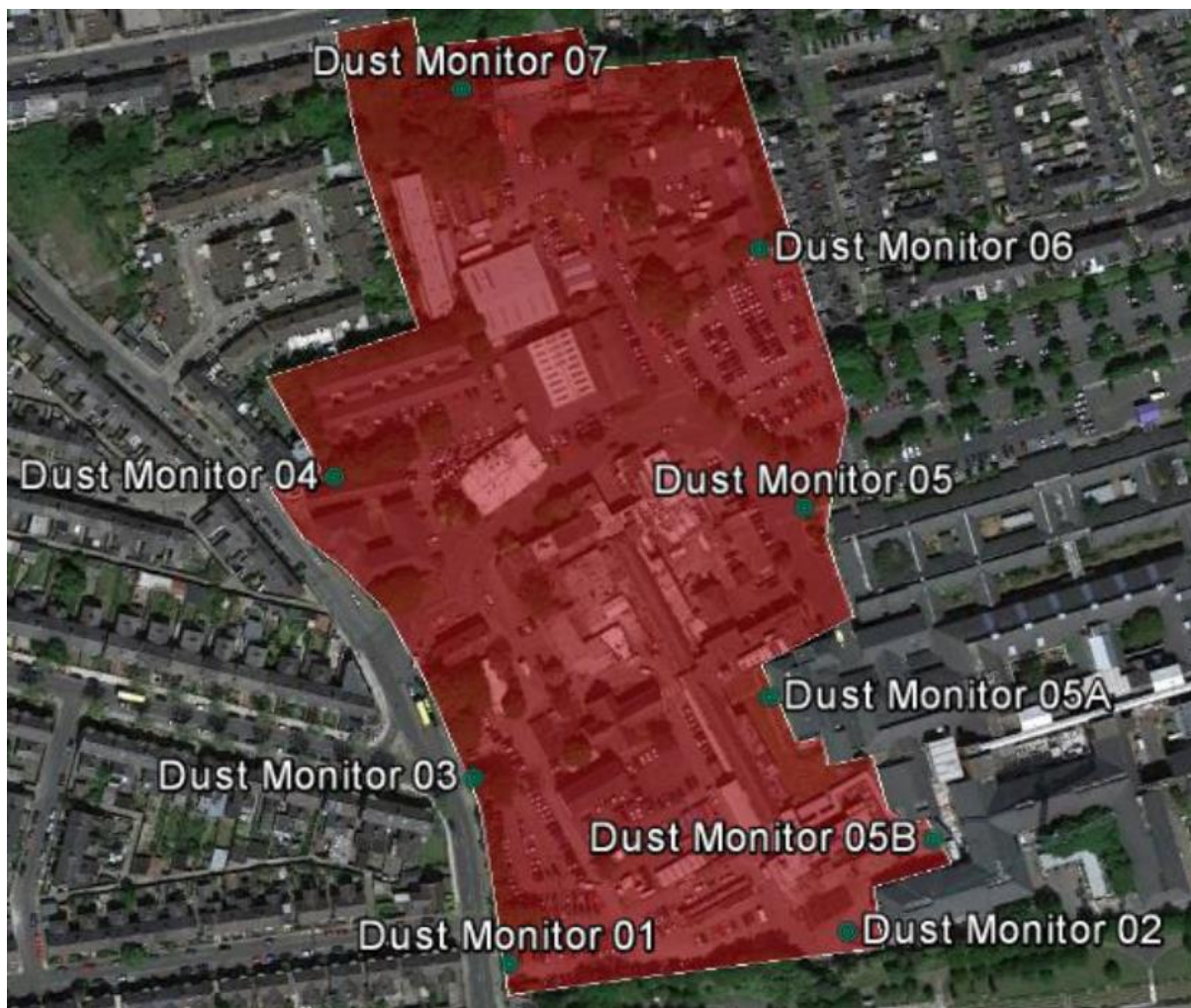


Figure 3. Previous location of Dust monitors on site (April 2017 to August 2017).